

UNITS & FLOORPLANS

GREAT NORTHERN INDUSTRIAL PARK

2707 PROGRESSIVE WAY

greatnorthernindustrialpark.com



ILYA TIHANENOKS
Principal
604 260 1869
ilya.t@avisonyoung.com

GORD ROBSON*
Principal
604 647 1331
gord.robson@avisonyoung.com
*Personal Real Estate Corporation

RILEY STEPHEN
Sales Assistant
604 757 4924
riley.stephen@avisonyoung.com

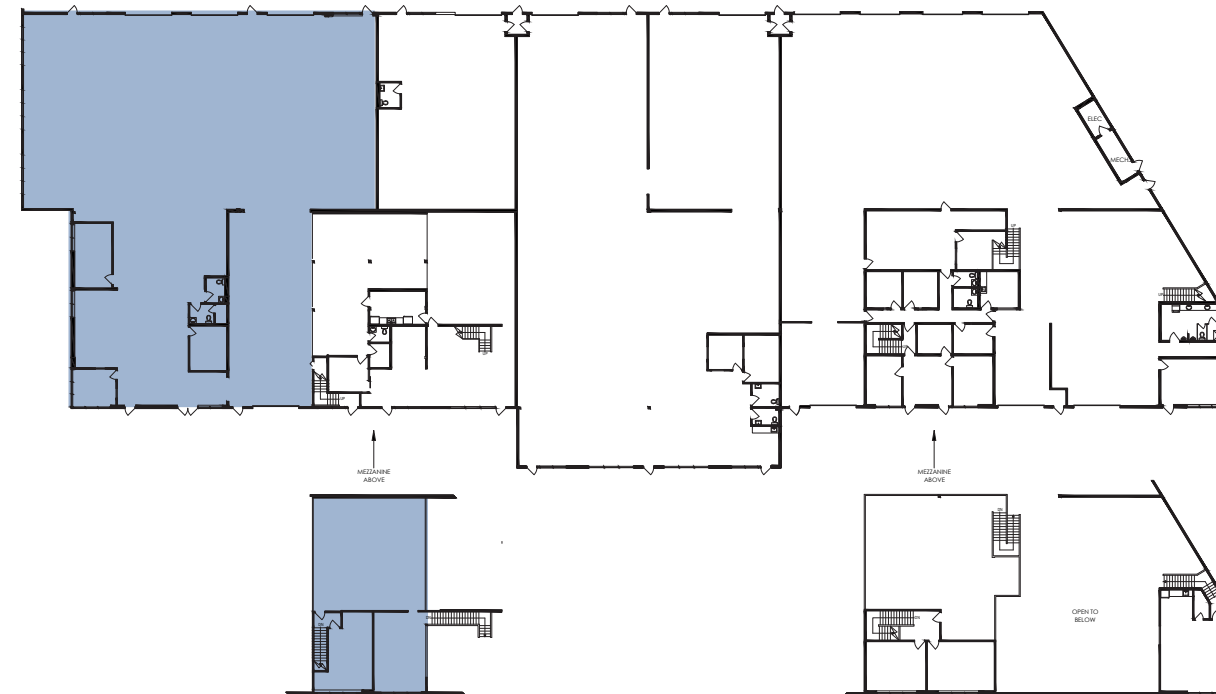
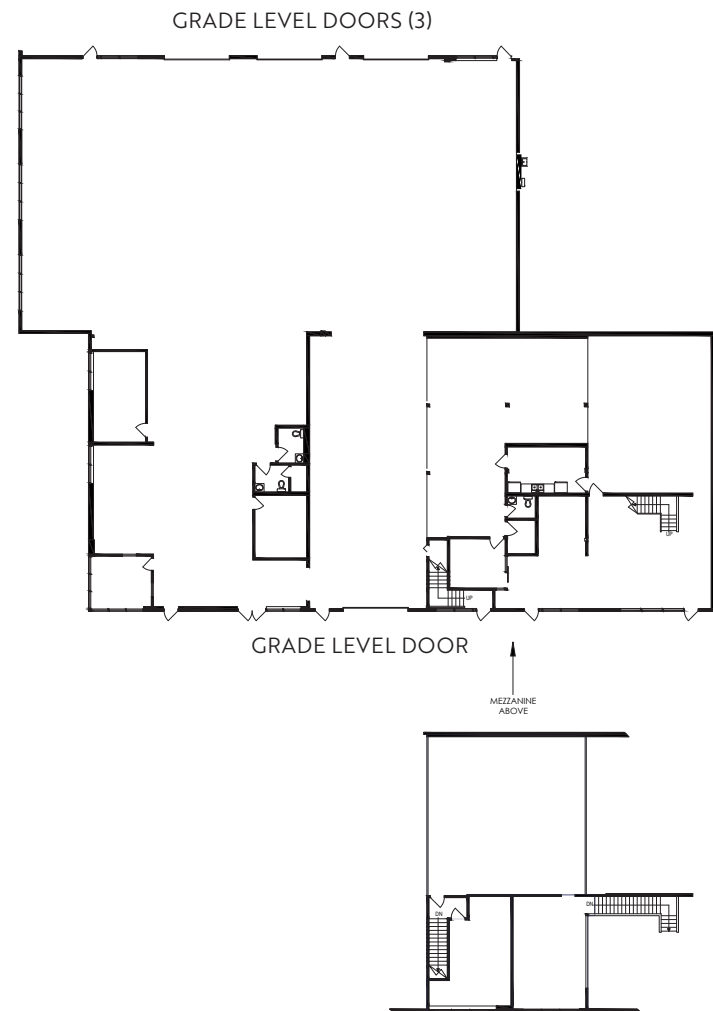
For more information:
greatnorthernindustrialpark.com

CanFirst
CAPITAL MANAGEMENT

**AVISON
YOUNG**

Unit 101

2707 Progressive Way, Abbotsford, BC



UNIT SIZE

Warehouse	14,122 sf
Mezzanine	2,062 sf
Total	16,184 sf



LOADING

Four (4) grade level loading doors (12' W x 16'H)



WASHROOM

Three (3) washrooms



CEILING HEIGHT

24' clear

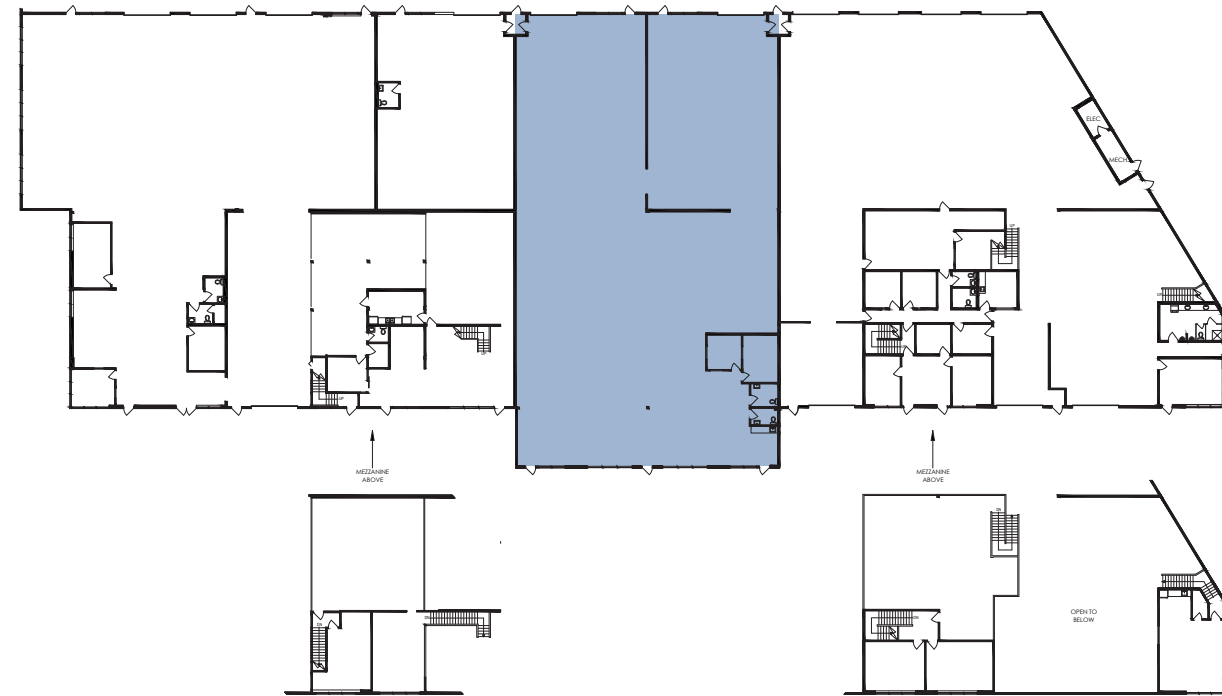
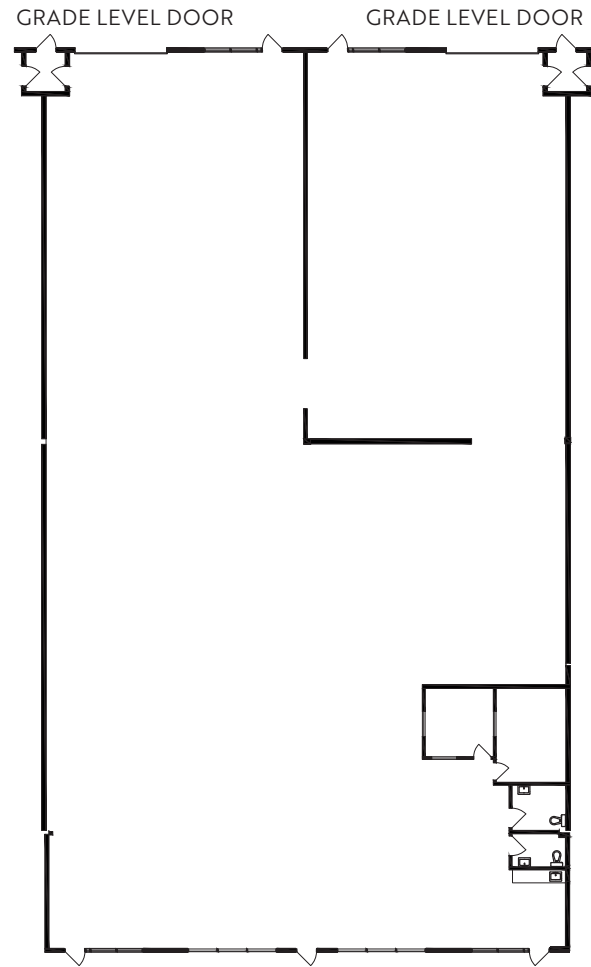


EARLIEST POSSESSION

August 1, 2027

Unit 104

2707 Progressive Way, Abbotsford, BC



UNIT SIZE

11,489 sf



LOADING

Two (2) grade level loading doors (12' W x 16' H)



WASHROOM

Two (2) washrooms



CEILING HEIGHT

24' clear

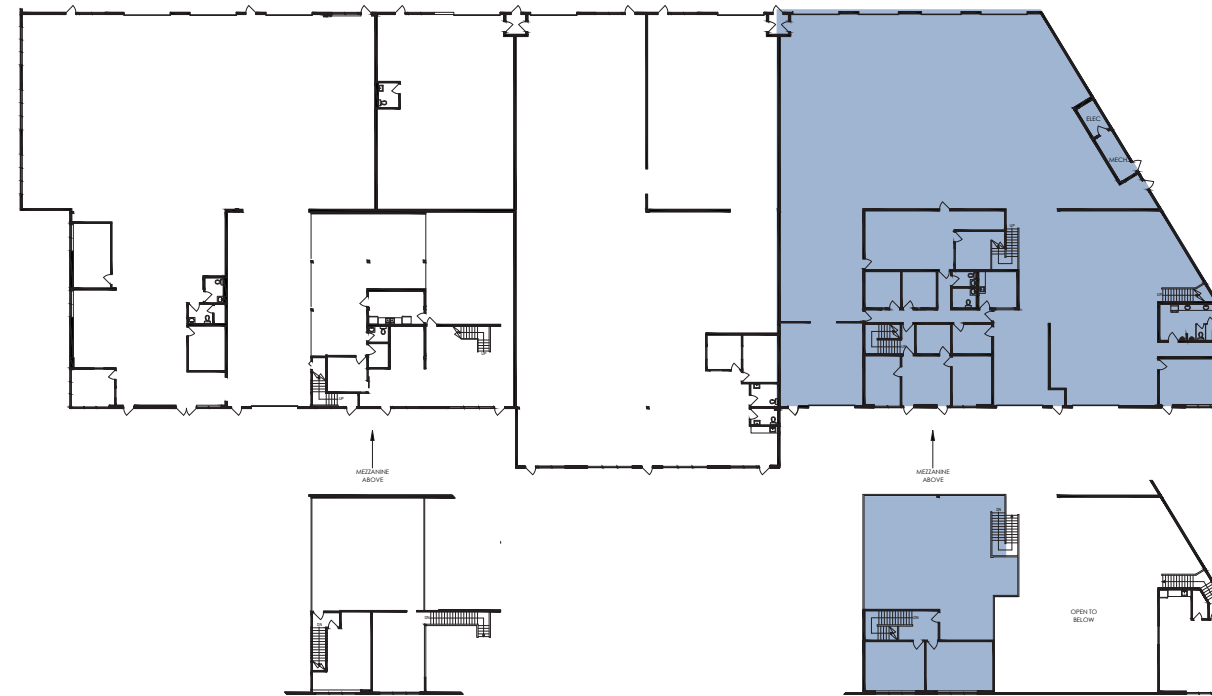
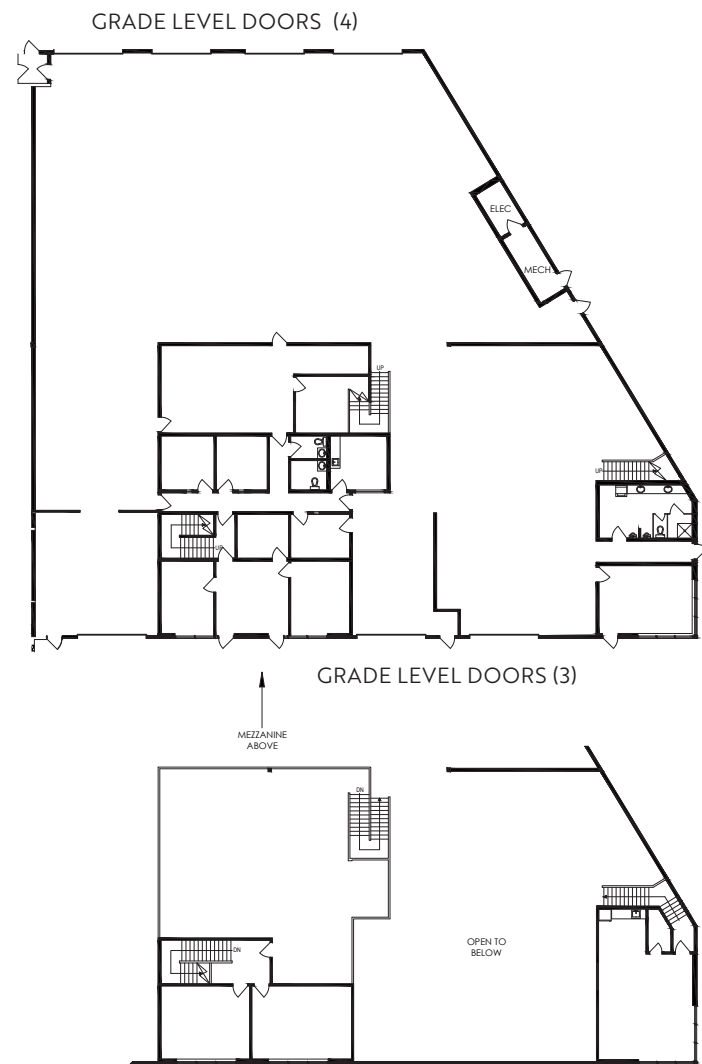


EARLIEST POSSESSION

October 1, 2027

Unit 107

2707 Progressive Way, Abbotsford, BC



UNIT SIZE

Warehouse	12,571 sf
Mezzanine	3,143 sf
Total	15,714 sf



LOADING

Seven (7) grade level loading doors (12' W x 16' H)



WASHROOM

Three (3) washrooms



CEILING HEIGHT

24' clear

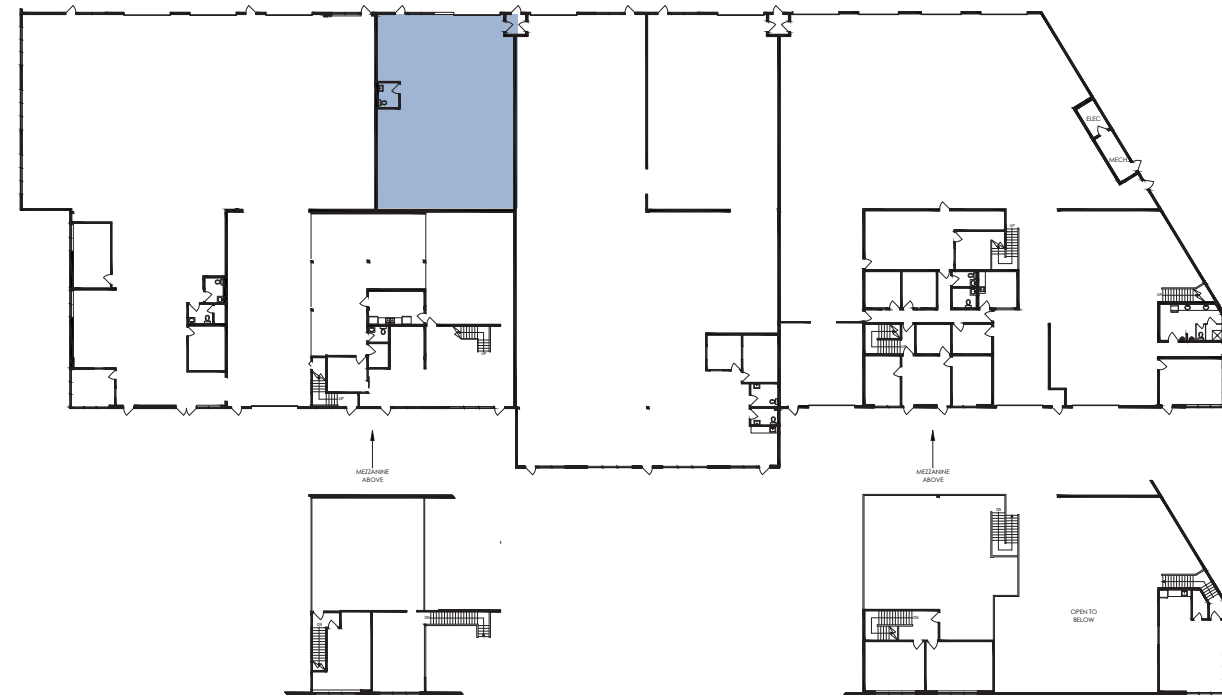
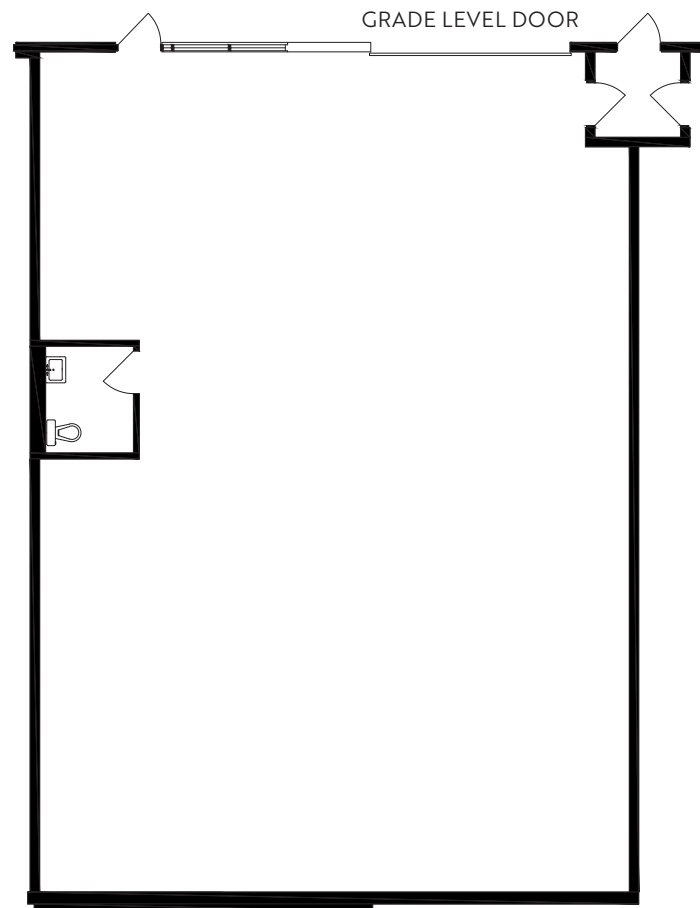


EARLIEST POSSESSION

6 months notice

Unit 113

2707 Progressive Way, Abbotsford, BC



UNIT SIZE

2,505 sf



LOADING

One (1) grade level loading door (12' W x 16' H)



WASHROOM

One (1) washroom



CEILING HEIGHT

24' clear



EARLIEST POSSESSION

6 months notice

GREAT NORTHERN INDUSTRIAL PARK

ILYA TIHANENOKS
Principal
604 260 1869
ilya.t@avisonyoung.com

GORD ROBSON*
Principal
604 647 1331
gord.robson@avisonyoung.com
*Personal Real Estate Corporation

RILEY STEPHEN
Sales Assistant
604 757 4924
riley.stephen@avisonyoung.com

For more information:
greatnorthernindustrialpark.com

CanFirst
CAPITAL MANAGEMENT

**AVISON
YOUNG**